

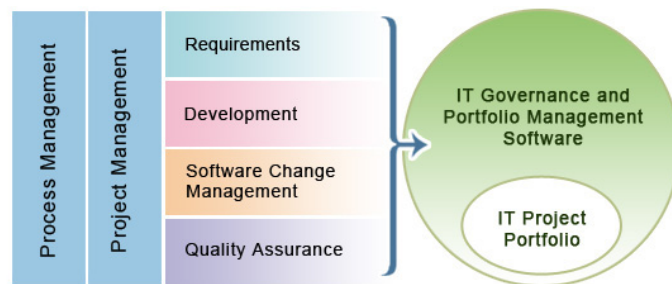
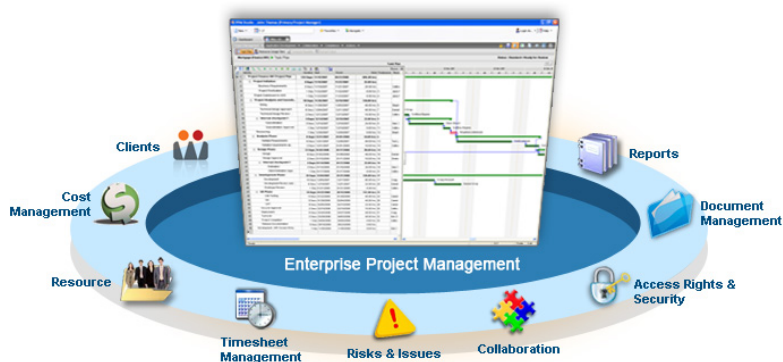
PPM STUDIO

ONE TOOL FOR PORTFOLIO, PROJECT AND APPLICATION LIFECYCLE MANAGEMENT



Business leaders today are facing increasing challenges in selecting and managing projects, and are turning to technology solutions for help. In the current economy, it's more important than ever before to thoroughly and efficiently evaluate all incoming project requests and invest in those that are most critical. Even after creating a project portfolio, many companies struggle with tracking and providing accountability for project success, as well as capturing all project benefits. Organizations are thinking strategically and finding ways to continuously identify, select and manage a project portfolio in alignment with key performance metrics (KPI) and strategic business objectives. With Project Portfolio Management (PPM), leaders can effectively manage projects, budgets and resources across the entire organization. PPM solutions provide a complete view of all your projects, enabling you to efficiently prioritize work, allocate resources across projects, make better business decisions and, most importantly, increase project profitability.

SemanticSpace's integrated solution, **PPM Studio**, empowers your organization to align project investments with specific objectives and gain real-time visibility into your existing project portfolio, as well as future projects that are in demand. This collaborative, scalable, enterprise solution helps achieve effective prioritization and accurate budgeting and forecasting. Organizations manage projects across the entire Software Development Lifecycle, from inception to delivery. Business leaders are better able to effectively manage change, gain visibility into internal processes and metrics, increase operational efficiencies and develop intelligence for better decision-making, ultimately helping to achieve business goals by maximizing returns and reducing costs in project portfolios. SemanticSpace experts have years of experience implementing PPM Studio to equip businesses with automated reporting of project status, from the initial idea or request, through prioritization and execution, to completion and release, and finally to benefits analysis.



Portfolio Management

Portfolio Management provides a high-level view of the portfolio, enabling business leaders to thoroughly and efficiently evaluate any project investment against business objectives, ROI, risks, budget and resources. With effective prioritization, PPM Studio helps streamline the overall process of managing strategic portfolios. The Project Governance Framework ranks all competing investments to ensure that the most critical projects are approved and executed, simplifying the creation of portfolios and helping leaders make well-informed decisions. Users are also equipped with real-time visibility across the project portfolio with dashboards that contain key performance indicators. PPM Studio also improves resource utilization to provide clear visibility of resource allocation and utilization across your organization's projects and business units. With pipeline management capabilities, organizations can better manage resources and determine how a set of projects will be executed in a specific timeframe.

Enterprise Project Management

PPM Studio manages multiple projects and ensures that each project is on time, on track and within budget, with proper planning, tracking and monitoring. Its unique, centralized project workspace provides a single screen view for complete visibility. Work Breakdown Structure enables business leaders to track milestones, with parameters such as schedule, effort and cost, in order to gain better control and evaluate progress. By providing a comprehensive, graphical view of tasks, dependencies, milestones and progress, PPM Studio enables managers to measure project success and align costs with objectives. This unified platform also enables teams to collaborate and engage in discussions as well as share notes, documents, comments and action items. Seamless integration between Task Management and Time Sheet modules allow team members to update the status of allocated tasks with effort spent, remaining work and accomplishments, in order to automatically calculate projected end dates.

Application Lifecycle Management

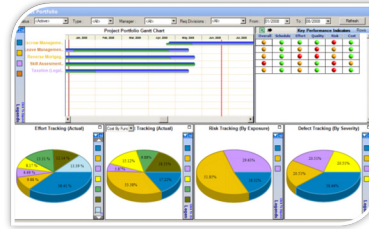
PPM Studio's Portfolio and Project Management features can be combined with Application Lifecycle Manager (ALM) to maximize business value across the Software Development Lifecycle (SDLC). ALM integrates engineering teams on a single, collaborative platform to build, launch and maintain software applications. The comprehensive platform brings together requirements management, design specifications, build automation, test design, defect tracking and product release. ALM helps organizations in defining and managing their product development lifecycle using various standard methodologies, including Waterfall, Spiral, Iterative, CMMI and Agile. End-to-end traceability keeps teams updated about changes to any object and the impact of those changes.

PPM	ALM
◆ Demand Management	◆ Requirements Management
◆ Portfolio Selection	◆ Test Management
◆ Capacity Planning	◆ Defects Management
◆ Resource Management	◆ Build Management
◆ Financial Management	◆ Release Management
◆ Project Scheduling	
◆ Time Reporting	
◆ Team Collaboration	
◆ Portfolio Reporting	
◆ Project Reporting	
◆ Program Management	

PPM Studio Features

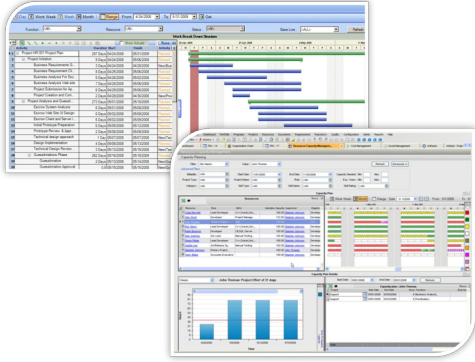
Portfolio Management and Monitoring

Establishes project governance framework to evaluate competing project investments. Portfolio Monitoring helps manage the successful delivery of projects across the organization, helping managers stay informed of project progress and status in order to make informed decisions. PPM Studio enables the successful monitoring, tracking and reporting of real-time progress.



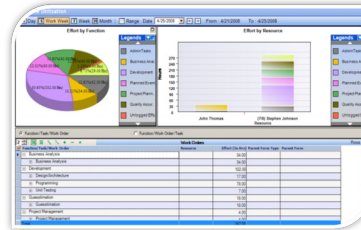
Project Management, Monitoring, Reporting and Costing

Provides project managers with a centralized view for complete visibility and project progress updates. Work Breakdown Structure enables business leaders to track milestones in schedule, effort, cost and tasks completed, in order to gain better control over projects and evaluate progress. Project dashboards and real-time health indicators help monitor project progress and report status to help determine whether a project is on schedule.



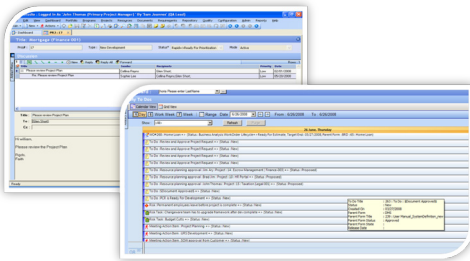
Resource Management, Time Management and Accounting

Benefits the organization by ensuring optimal human resource utilization with organization-wide capacity planning and management, resource skills and training management and resource timesheet review. Skills-based resource management ensures best fit resource allocation. With Time Sheet Management, your organization can automate the entry, tracking, billing and reporting of effort and time of employees across the enterprise, helping to improve deliverables, productivity and performance.



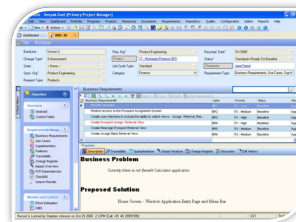
Team Collaboration

Brings project teams together to engage in threaded discussions, project meetings, notes, comments, actions items and more. User-defined alerts and notifications are triggered automatically by certain conditions and are sent to stakeholders or task owners. Users are also alerted of important events, including task assignments, task progress updates, task starts and task delays.



Requirements, Test, Defect, Build and Release Management

Ensures complete and timely delivery of application software by providing a strong requirements development and management environment to build and deliver requirements and features into the application software. Test Management keeps track of product quality across all SDLC phases from business requirements development to product delivery. Defects reported by QA teams are displayed as bar charts so that they can be resolved. Release Management ensures successful product deliveries with milestone planning, monitoring, collaboration and audit capabilities.



About Us

SemanticSpace is a global IT services company providing application development, testing, application maintenance and outsourcing services. Comprised of three key brands for its IBM, Microsoft and Testing Divisions – Prolifics, SST and Arsin respectively – the organization brings over 30 years experience and a strong global presence across US, Europe and Asia. We offer clients end-to-end services combined with the market's most seasoned and skilled consultants and the dedicated care and attention that comes from a highly-specialized, boutique company. Our mission is to be a technology partner to our customers assisting across the entire software development lifecycle, as well as providing outsourced maintenance services to free up our customer's resources. By combining application frameworks, prebuilt components, custom development expertise, a governance framework and a blended shore model, we help organizations decrease risk in complex software development and deployment investments, improve time to market and increase success of business strategy execution.

SEMANTICSPACE

www.semanticsspace.com e: solutions@semanticsspace.com

u.s. headquarters: 114 west 47th street new york new york 10036 USA t: 212.267.7722 or 800.458.3313 f: 212.608.6753
new york city orlando boston philadelphia washington dc san francisco london hamburg hyderabad

Key Customers

- ◆ Bank of America
- ◆ Fox Sports
- ◆ Gati
- ◆ Illinois Mutual
- ◆ Memory Showcase
- ◆ MOLI
- ◆ Projector PSA
- ◆ Towergate
- ◆ The Welch Way